



**RV CONNEX**

# **TITUM M2**

**MULTI - SOLUTION DRONE**



# TITUM M2

## MULTI - SOLUTION DRONE



TITUM M2 (Multi-rotor & Multi-purpose) is an enterprise drone designed to meet the needs of today's diverse mission payloads on a single launch vehicle. Unlike conventional drones, TITUM M2 has specific applications and special features that enable working in high-risk areas and life-threatening missions. To serve different purposes in the public and private sectors, TITUM M2 comes with the following qualities:

### Emergency and Disaster Management

- Wildfire monitoring and firefighting.
- Search & rescue.
- Disaster relief.
- Radio communication repeater.

### Transportation and Logistics

- Advanced delivery solutions.
- Heavy loads carrying.

### Infrastructure Inspection

- Power transmission line inspection.
- Railway inspection.
- Oil and gas pipeline inspection.
- Photovoltaic and wind turbine inspections.

### Surveying and Mapping

- 3D mapping.
- Agriculture detect plant damage and spray services.



AI Camera



Oil/ Gas Sensor



3D Mapping Lidar



High-quality  
Phase One Camera



Magazine for up to  
8 Fire Extinguishing Balls



Infrared Camera



Heavy Loads



Spray Cleaner

## PAYLOAD CONFIGURATIONS



# SPECIFICATIONS

- Maximum Take-off Weight 90 kg.
- Payload Capacity Up to 30 kg.  
(Excluding battery)
- Number of Rotors 6
- Max Range 13 km.
- Traveling Max Speed 40 km/hr.
- Maximum Flight Altitude 700 m.
- Position Accuracy RTK±5 cm.
- Operating Temperature -10°C to +50°C.
- IP Rating IP54

- Fully automated and configurable autopilot.
- Onboard data logger with encryption.
- Dual datalink with LOS range up to 20km.
- Redundant sensors.
- Obstacle avoidance & collision detection sensors front and back.
- Camera auto landing.

## Hovering Endurance

- 5 kg. payload upto 50 min.
- 30 kg. payload 18 min.

## Flight Performance

- 5 kg. payload upto 40 min.
- 30 kg. payload 15 min.

# DIMENSIONS

## Stretched Drone

- Diameter 322 cm.



## Folded Drone

- Diameter 235 cm.
- Height 76 cm.



## REMOTE CONTROL AND PERSONAL GROUND CONTROL STATION

- User friendly software for complete drone control.
- Compact size and lightweight.
- Endurance 3 hr. (external battery 6 hr.)

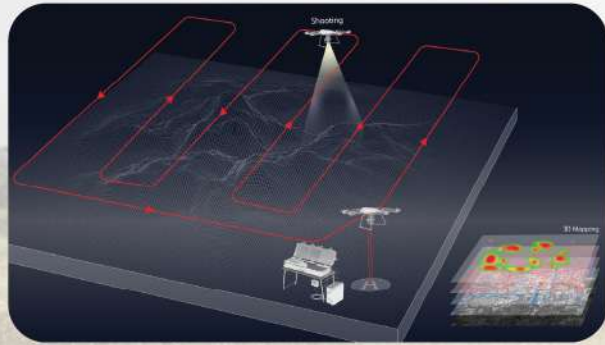


## SUPPORT PACKAGE INCLUDES

- Training.
- Spare parts.
- Customer service online support.
- Documentation.
- Flight simulator (optional).

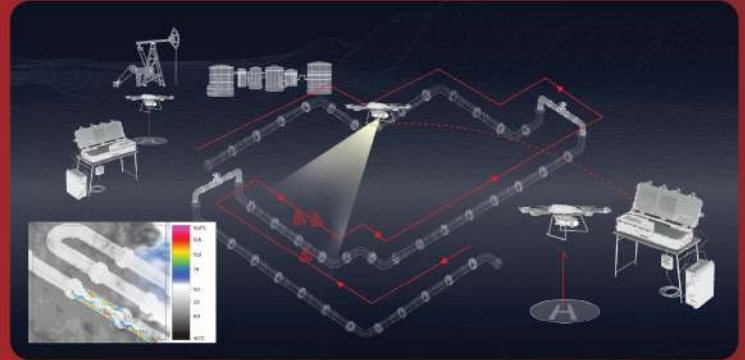
## SURVEYING AND MAPPING

TITUM M2 revolutionizes surveying and mapping with versatile applications spanning land surveys, geographic information systems (GIS), urban planning, design, construction, and beyond, offering precision and efficiency.



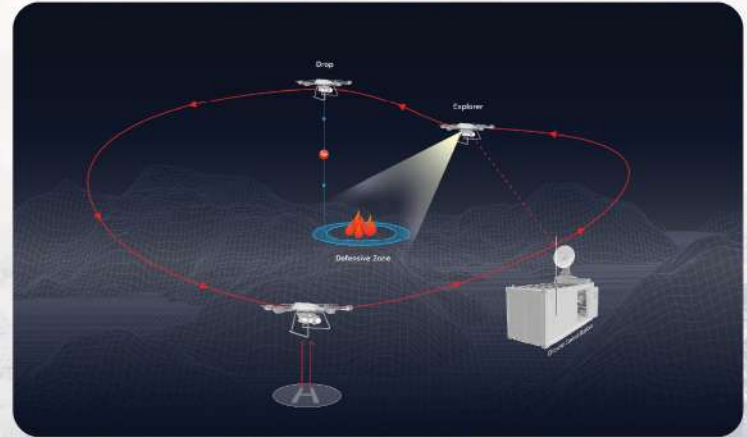
## OIL AND GAS PIPELINE INSPECTION

- TITUM M2 revolutionizes pipeline inspections by swiftly identifying defects, insulation issues, and leaks using advanced gas sensor technology.
- Equipped with a range of sensors, including thermal imaging and methane detection, to ensure comprehensive monitoring.
- Performs detailed inspections of both overground and underground pipelines, capturing thousands of images and videos for cloud-based processing.
- Analyzes pipeline insulation and heat loss in conjunction with AI-driven diagnostics, enhancing operational efficiency and safety.



# WILDFIRE MONITORING AND FIREFIGHTING

- Autonomous or semi-autonomous operation.
- Advanced thermal cameras and AI analysis for precise fire detection.
- Long-duration, low-altitude flights (<300 m.) at slow speeds (<30 km/hr.)
- Real-time fire mapping with pinpoint accuracy.
- Equipped with firefighting tools, including fireball deployment to contain fire spread.



Ground Level

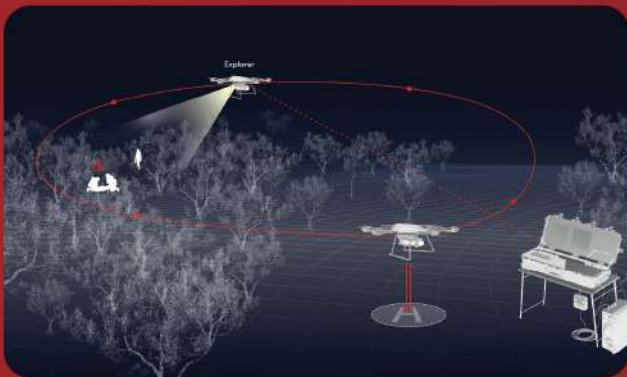


Low Altitude Flight Area  
10 m. - 350 m. - Rotary-Wing UAV



## DISASTER RELIEF

In times of floods, collapsed infrastructure, or debris-blocked areas, delivering critical aid becomes a major challenge for emergency responders. TITUM M2 rises to the occasion, effortlessly navigating inaccessible terrain and carrying significant payloads of relief supplies, delivering them precisely where they are needed most to support disaster recovery efforts.

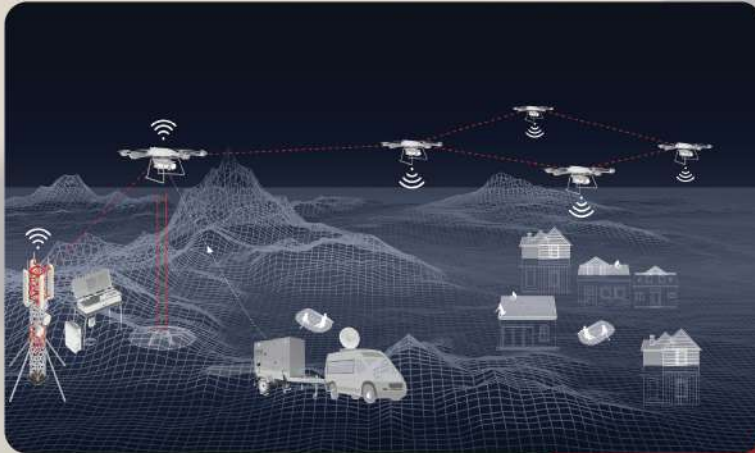
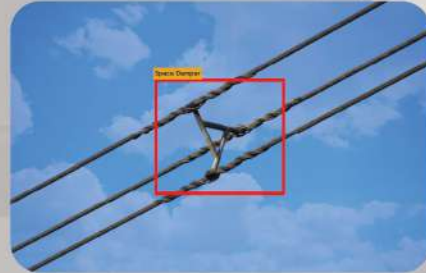


## SEARCH & RESCUE

Equipped with a high-powered spotlight and live video streaming capabilities, TITUM M2 transforms night-time search and rescue missions. Its advanced technology enables the rapid and efficient scanning of vast areas, providing a practical and effective solution for locating individuals in critical situations, even in the most challenging conditions.

# POWER TRANSMISSION LINE INSPECTION

- Essential for preventing power outages and reducing financial losses in the power and utilities sector.
- Utilizes real-time image transmission, AI-powered analysis, and diagnostics to detect faults.
- Operates in hostile environments, including harsh weather conditions, to enhance the efficiency and reliability of power transmission infrastructure.



## Wi-Fi/Cell Hotspot Capability:

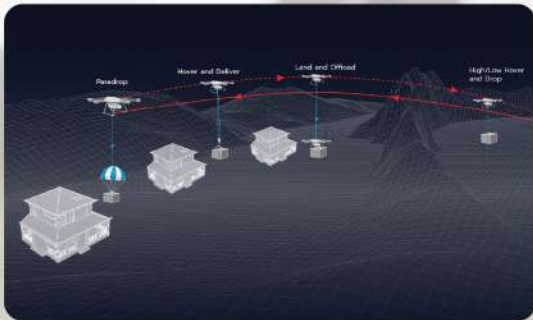
- Creates temporary Wi-Fi or cell hotspots in disaster-stricken areas to restore communication.
- Ensures uninterrupted communication during emergencies, such as floods, earthquakes, or hurricanes.

# TRANSPORTATION AND LOGISTICS

TITUM M2, a heavy-lift drone with a 30 kg. payload capacity, leverages BVLOS capabilities for diverse and efficient logistics operations.

**Advanced delivery methods for long-distance transportation include:**

- High/Low Hover and Drop: Hover to release payloads at low or high altitudes.
- Land and Offload: Land for payload removal by the user.
- Paradrop: Deploy payloads via parachute from any altitude.
- Hover and Deliver: Deliver payloads using a sling system, unhooked by the user at low altitude.





## Enterprise Drone for High-Risk Missions & Versatile Applications



**R V CONNEX CO., LTD.**

30/1 Moo 1, Phaholyothin Road, Klong Nueng Sub-District,  
Klong Luang District, Pathum Thani 12120 Thailand

Disclaimer: In keeping with our policy on continuous product improvement, all specifications are subject to change at any time.

- +66 2 090 9507
- contact@rvconnex.com
- www.rvconnex.com

