



RV CONNEX

SKY SCOUT

TACTICAL UAS



Unmanned Aerial Solutions
Engineered for Mission Success

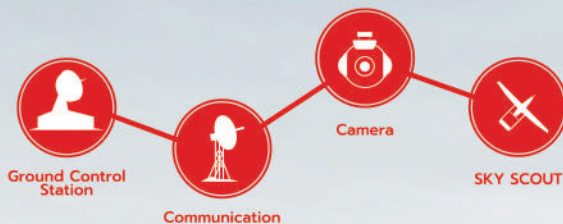
SKY SCOUT

Tactical UAS



SKY SCOUT is a cutting-edge aerial intelligence solution offering autonomous operation, multi-Ground Control Station (GCS) capability, and versatile payload options for missions ranging from surveillance to border security.

The in-house-manufactured compact and rugged GCS enhances control, providing options for flight training, mission simulation, and remote video terminals, ensuring comprehensive mission success. With proven operational effectiveness, cost-efficiency, and easy configurability, SKY SCOUT stands as the ideal choice for tailored mission needs.



KEY FEATURES

- **Redundant Flight Control System:** Derived from extensive in-house development, ensuring reliability
- **Fully Autonomous Operation:** Experience seamless autonomy for efficient missions
- **Multiple GCS Operation:** Operate the UAV via various Ground Control Stations with smooth handover capability
- **Redundant and Encrypted Communication:** Ensuring secure and reliable data transmission
- **Composite Airframe:** Featuring a fully composite structure for optimal durability and performance
- **Custom Transport Container:** Designed for easy and secure transport, providing flexibility in deployment

01 TECHNICAL SPECIFICATIONS

MTOW	140	kg.
LOS Range	>100	km.
Endurance	Up to 12	hrs.
Max Payload	16	kg.
Max Speed	105	kts.
Service Ceiling	12,000	ft.
Wingspan	6	m.
Length	3.6	m.

02 PAYLOAD CAPABILITY

- **Multi-Payload Capability:** Versatile options for diverse mission requirements
- **EO/IR Camera Sensors:** Advanced sensor capabilities for enhanced situational awareness
- **External Wing Hard Points:** Additional capacity for extended mission capabilities
- **Target Designation and Weapon Integration:** Additional capacity for extended mission capabilities

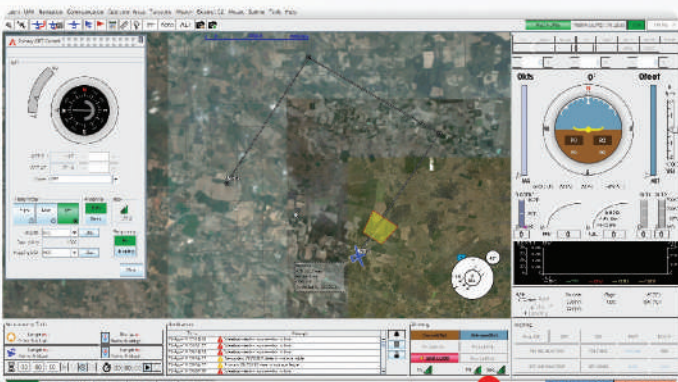


03 MISSION CAPABILITY

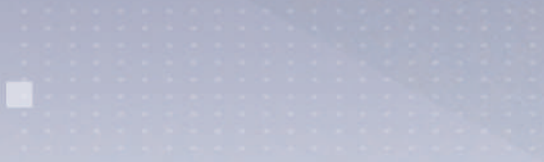
- **Versatile Mission Range:** From surveillance and ISR to border security and maritime patrol
- **Proven Operation Capabilities:** Demonstrated effectiveness in various operational scenarios
- **Cost-Effective:** Delivering high-value performance without compromising efficiency
- **Configurable for Customer Needs:** Easily adaptable to meet specific mission requirements

04 GROUND CONTROL STATION CAPABILITY

- **Compact and Rugged Version:** Tailored for durability and adaptability in diverse environments
- **In-House Manufacturing:** Ensuring quality control and customization options
- **Flight Training and Mission Simulator:** Comprehensive tools for effective training and mission planning
- **In-Flight Changes and Waypoint Mission:** Adaptable mission execution for real-time adjustments
- **Remote Video Terminal Option:** Enhancing remote monitoring capabilities for seamless operations



SKY SCOUT : TACTICAL UAS



R V CONNEX CO., LTD.

30/1 Moo 1, Phaholyothin Road, Klong Nueng Sub-District,
Klong Luang District, Pathum Thani 12120 Thailand

Remarks : In keeping with our policy on continuous product
improvement, this brochure is subject to change without notice.

+66 2 090 9507
contact@rvconnex.com
www.rvconnex.com